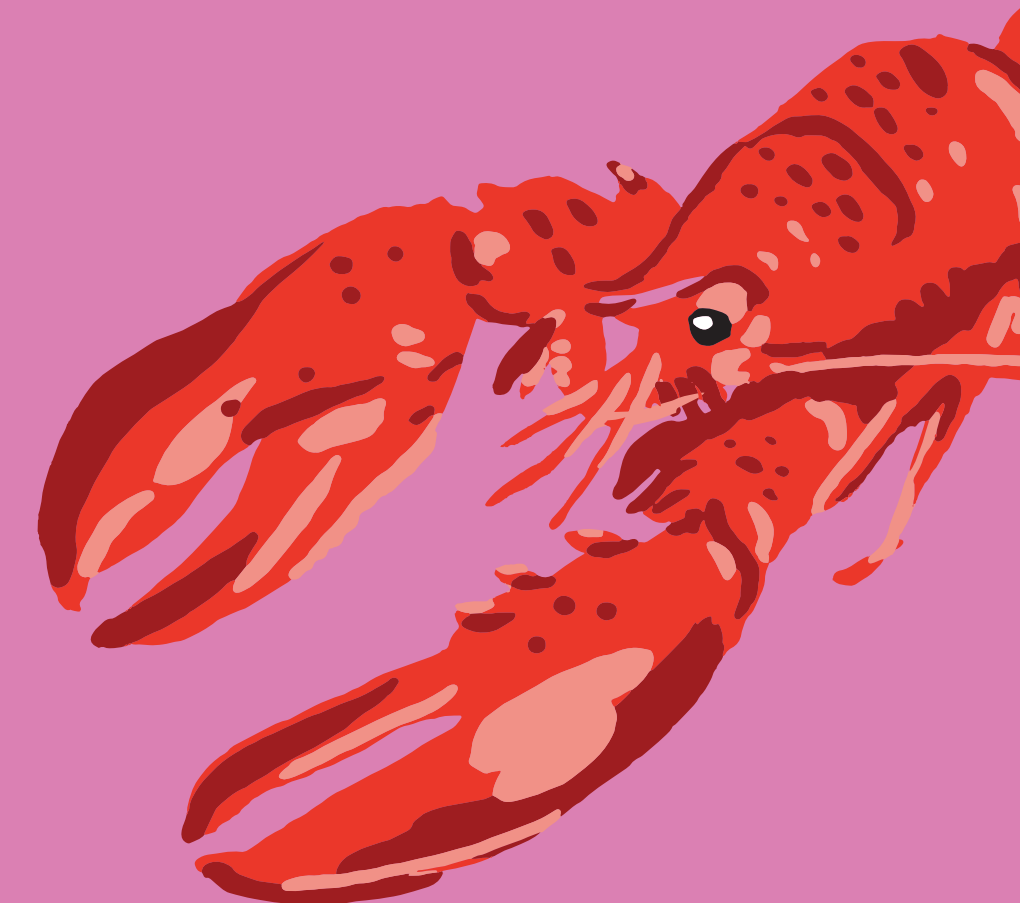


# SPRING 2020 LINE

- 02 Nylon
- 11 Canvas
- 13 Leather
- 15 Displays



# BAGGU

# NYLON

# Standard Baggu

WHSL  
MSRP

\$6  
\$12

MOQ: 10 | 100% ripstop nylon (40% recycled)  
25.5"H x 15.5"W x 6"D  
Folds into a flat 5" x 5" pouch. Holds 50lbs.  
Machine washable.

- Spring 1 Ships 1/28-2/11
- Spring 2 Ships 3/3-3/17



**TOMATO**  
7-42377-36546-6  
● SPRING 1



**ALOE**  
7-42377-36531-2  
● SPRING 1



**BLUE PAPAYA**  
7-42377-36537-4  
● SPRING 2



**GREEN LIME**  
7-42377-36540-4  
● SPRING 2



**PINK COCONUT**  
7-42377-36542-8  
● SPRING 2



**YELLOW DAISY**  
7-42377-36547-3  
● SPRING 2



**GREEN DAISY**  
7-42377-36539-8  
● SPRING 2



**BLACK DAISY**  
7-42377-36535-0  
● SPRING 2



**BB PRINT**  
7-42377-36532-9  
● SPRING 2



**I LOVE NY**  
7-42377-36549-7  
● SPRING 2



**LEOPARD**  
7-42377-36822-1  
● SPRING 1



**ELEPHANT BLUE**  
6-08887-84565-5  
● SPRING 1



**YELLOW HAPPY**  
6-08887-84591-4  
● SPRING 1



**PINK LOBSTER**  
7-42377-36543-5  
● SPRING 1



**BENGAL CAT**  
7-42377-36533-6  
● SPRING 1



**OCHRE ZEBRA**  
7-42377-36541-1  
● SPRING 1



**YELLOW SNAKES**  
7-42377-36548-0  
● SPRING 1



**ROSE CHECKERBOARD**  
7-42377-36544-2  
● SPRING 1



**BLACK CHECKERBOARD**  
7-42377-36534-3  
● SPRING 1



**GREEN CHECKERBOARD**  
7-42377-36538-1  
● SPRING 1



**BLUE MICROSTRIPE**  
7-42377-36536-7  
● SPRING 1



**TIGER STRIPE**  
7-42377-36545-9  
● SPRING 1



**THANK YOU HAPPY**  
6-08887-84582-2  
● SPRING 1



**SAILOR STRIPE**  
6-08887-84569-3  
● SPRING 1



**BRONZE**  
7-42377-36827-6  
● SPRING 1



**BRIGHT PINK**  
7-42377-36369-1  
● SPRING 1



**CRANBERRY**  
7-42377-36826-9  
● SPRING 1



**RED**  
6-08887-84567-9  
● SPRING 1



**YOLK**  
6-08887-84578-5  
● SPRING 1



**COBALT**  
6-08887-84572-3  
● SPRING 1



**GREY**  
6-08887-84574-7  
● SPRING 1



**BLACK**  
6-08887-84571-6  
● SPRING 1



**WHITE**  
6-08887-84570-9  
● SPRING 1

# NYLON

## Standard Baggu Set of 3

WHSL  
MSRP

\$18  
\$36

MOQ: 6 | 100% ripstop nylon (40% recycled)  
6.5"H x 5"W x 2.25"D

A set of three Standard Baggus in a delightful gift pouch. Each set contains three unique prints.



CHECKERBOARD  
7-42377-36550-3  
● SPRING 1



FANCY ANIMAL  
7-42377-36551-0  
● SPRING 1



TROPICAL FRUIT  
7-42377-36553-4  
● SPRING 2



DAISY  
7-42377-36552-7  
● SPRING 2



THANK YOU  
7-42377-36670-8

- Spring 1 Ships  
1/28-2/11
- Spring 2 Ships  
3/3-3/17



# NYLON

WHSL  
MSRP

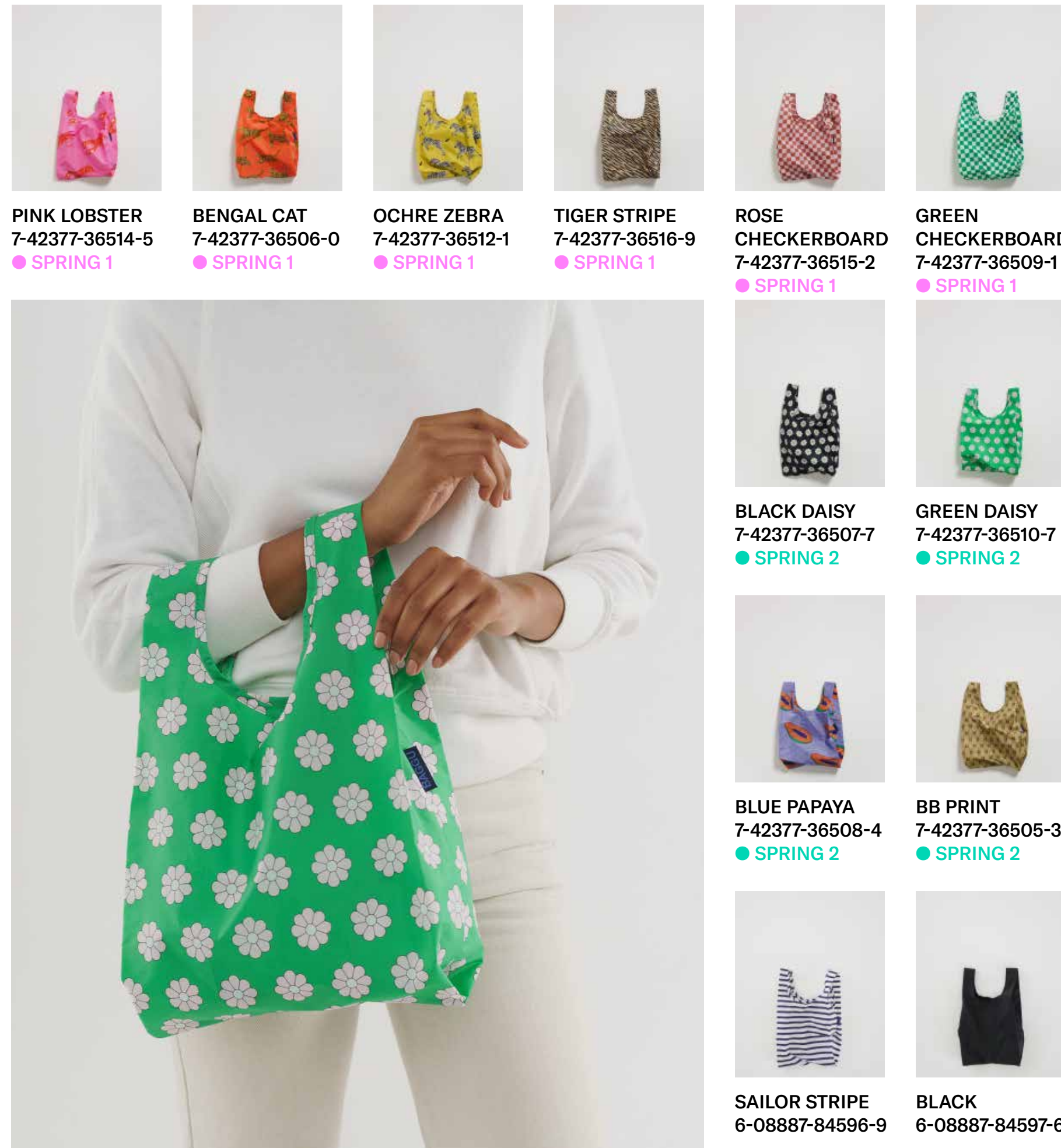
- Spring 1 Ships 1/28-2/11
- Spring 2 Ships 3/3-3/17

## Baby Baggu

\$5  
\$10

MOQ: 10 | 100% ripstop nylon (40% recycled)  
18"H x 10"W x 4"D

Folds into a flat 4" x 4" pouch, holds 50lbs,  
machine washable.



PINK LOBSTER  
7-42377-36514-5  
● SPRING 1

BENGAL CAT  
7-42377-36506-0  
● SPRING 1

OCHRE ZEBRA  
7-42377-36512-1  
● SPRING 1

TIGER STRIPE  
7-42377-36516-9  
● SPRING 1

ROSE CHECKERBOARD  
7-42377-36515-2  
● SPRING 1

GREEN CHECKERBOARD  
7-42377-36509-1  
● SPRING 1



BLACK DAISY  
7-42377-36507-7  
● SPRING 2



GREEN DAISY  
7-42377-36510-7  
● SPRING 2



BLUE PAPAYA  
7-42377-36508-4  
● SPRING 2



BB PRINT  
7-42377-36505-3  
● SPRING 2



SAILOR STRIPE  
6-08887-84596-9



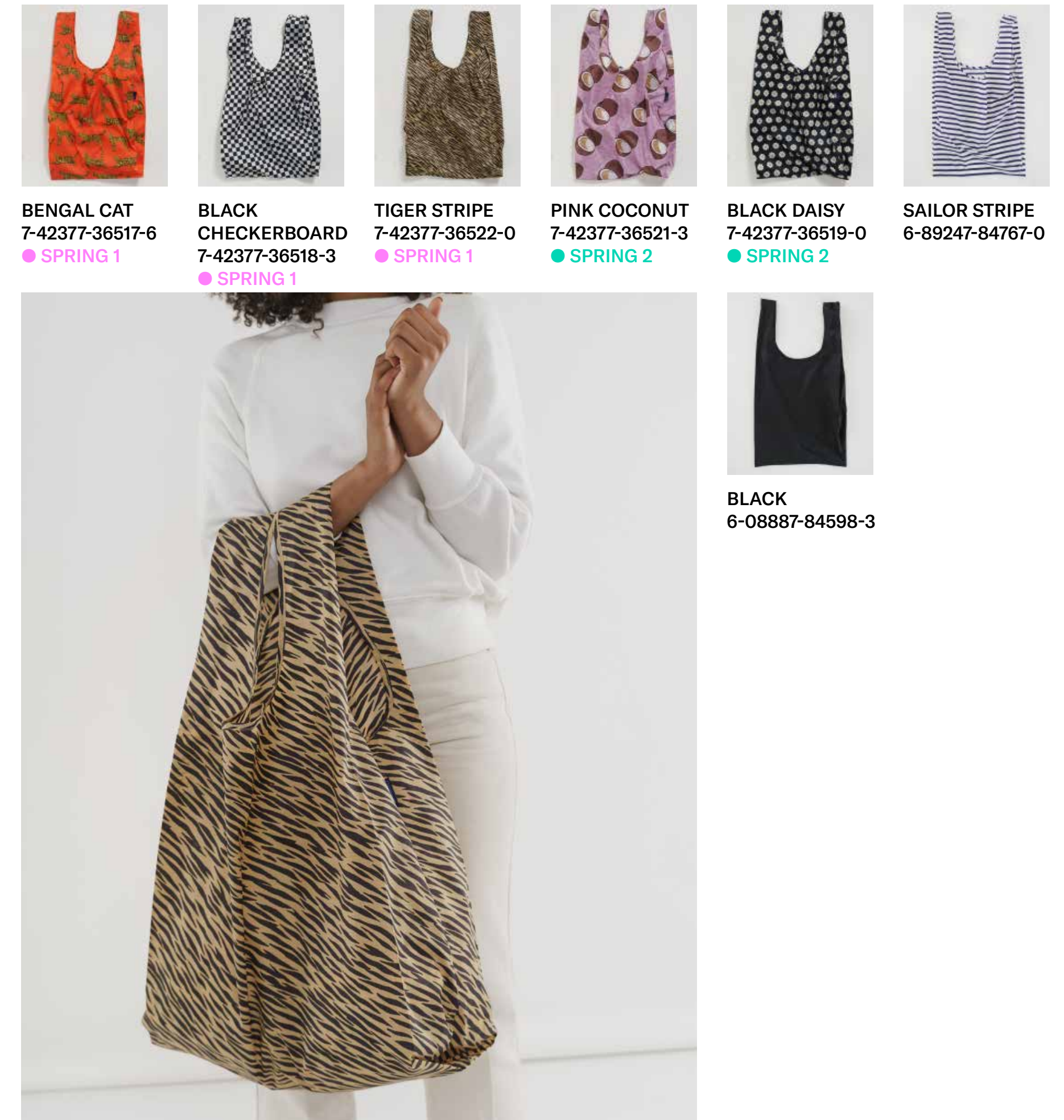
BLACK  
6-08887-84597-6

## Big Baggu

\$8  
\$16

MOQ: 10 | 100% ripstop nylon (40% recycled)  
33"H x 18"W x 9"D

Folds into a flat 7" x 7" pouch, holds 50lbs,  
machine washable.



BENGAL CAT  
7-42377-36517-6  
● SPRING 1

BLACK CHECKERBOARD  
7-42377-36518-3  
● SPRING 1

TIGER STRIPE  
7-42377-36522-0  
● SPRING 1

PINK COCONUT  
7-42377-36521-3  
● SPRING 2

BLACK DAISY  
7-42377-36519-0  
● SPRING 2

SAILOR STRIPE  
6-89247-84767-0



BLACK  
6-08887-84598-3

# NYLON

WHSL  
MSRP

## 3D Zip Set

\$17  
\$34

MOQ: 10 | 100% ripstop nylon (40% recycled)  
S: 7"H x 3.5"W x 3.5"D  
M: 8.5"H x 5"W x 5"D  
L: 10"H x 7"W x 6.5"D

Ships in cardstock sleeve for easy hanging.  
Machine washable. Swatches show sizes S, M, L  
from left to right.



CHECKERBOARD  
7-42377-36433-9  
● SPRING 1



FANCY ANIMAL  
7-42377-36557-2  
● SPRING 1



PIGMENT  
7-42377-36556-5  
● SPRING 1



DAISY  
7-42377-36554-1  
● SPRING 2



TROPICAL FRUIT  
7-42377-36555-8  
● SPRING 2

- Spring 1 Ships 1/28-2/11
- Spring 2 Ships 3/3-3/17



## Go Pouch Set

\$19  
\$38

MOQ: 10 | 100% heavyweight nylon  
S: 4"H x 6.75"W x 2.25"D  
M: 7"H x 10.5"W x 4.25"D  
L: 9.5"H x 14"W x 6"D

Ships in cardstock sleeve for easy hanging.  
Machine washable.



FANCY ANIMAL  
7-42377-36568-8  
● SPRING 1



VENICE BEACH  
7-42377-36569-5  
● SPRING 1



ZUMA  
7-42377-36570-1  
● SPRING 1



LEOPARD  
7-42377-36405-6



# NYLON

WHSL  
MSRP

- Spring 1 Ships 1/28-2/11
- Spring 2 Ships 3/3-3/17

## Dopp Kit

\$15  
\$30

MOQ:10 | 100% heavyweight nylon  
4.5"H x 8.5"W x 4.5"D  
Machine washable.



TOMATO  
7-42377-36498-8  
● SPRING 1

CAMEL  
7-42377-36496-4  
● SPRING 1

BLACK DAISY  
7-42377-36494-0  
● SPRING 2



## Puffy Laptop Sleeve 13"

\$14  
\$28

MOQ: 5 | 100% ripstop nylon (40% recycled)  
13"H x 10.25"W x 0.75"D  
A quilted case for a 13" laptop or tablet.



BLACK  
7-42377-36429-2



BRONZE  
7-42377-36431-5



TIGER STRIPE  
7-42377-36529-9  
● SPRING 1



BLUE PAPAYA  
7-42377-36675-3  
● SPRING 2



BLACK DAISY  
7-42377-36527-5  
● SPRING 2



BRIGHT PINK  
7-42377-36430-8



## Puffy Tote

\$34  
\$68

MOQ: 2 | 100% ripstop nylon (40% recycled)  
15.75"H x 19.75"W x 4.75"D  
A comfortable quilted tote. 11" shoulder strap drop. Interior and exterior patch pockets. Zip top closure. Machine washable.



EUCALYPTUS  
7-42377-36530-5  
● SPRING 1



BLACK  
7-42377-36350-9



# NYLON

WHSL  
MSRP

- Spring 1 Ships 1/28-2/11
- Spring 2 Ships 3/3-3/17

## Sport Messenger Bag

NEW!

\$37  
\$74

MOQ: 2 | 100% heavyweight nylon  
10"H x 16.5"W x 6.5"D

17" max strap drop. Interior lapstop sleeve with velcro closure. One exterior and one interior zip pocket. Recycled ripstop nylon lining. Adjustable black logo strap. Machine washable.



TOMATO  
7-42377-36599-2  
● SPRING 1

EUCALYPTUS  
7-42377-36597-8  
● SPRING 1

CAMEL  
7-42377-36596-1  
● SPRING 1

BLACK  
7-42377-36595-4  
● SPRING 1



## Travel Sport Messenger Bag

NEW!

\$44  
\$88

MOQ: 2 | 100% heavyweight nylon  
13.5"H x 21"W x 7.5"D

16.5" max strap drop. Interior sleeve with velcro closure. Two exterior patch pockets, one interior zip pocket. Recycled ripstop nylon lining. Adjustable black logo strap. Machine washable.



TOMATO  
7-42377-36608-1  
● SPRING 1

CAMEL  
7-42377-36606-7  
● SPRING 1

BLACK  
7-42377-36605-0  
● SPRING 1



## New for Spring: Black Logo Straps

Our logo strap now comes in an all-black tonal webbing for a subtle but sporty look.

### FEATURED ON:

Sport Messenger Bag  
Travel Sport Messenger Bag  
Fanny Pack  
Sport Crossbody

Small Sport Backpack  
Large Sport Backpack  
Small Block Purse  
Block Purse



# NYLON

WHSL  
MSRP

- Spring 1 Ships 1/28-2/11
- Spring 2 Ships 3/3-3/17

## Fanny Pack

\$24  
\$48

MOQ: 5 | 100% heavyweight nylon | 6.5"H x 8"W x 2"D

Exterior and interior zip pockets. Adjustable 34.25" black logo strap. Machine washable.



BLACK  
7-42377-36499-5



BRIGHT PINK  
7-42377-36500-8  
● SPRING 1

TOMATO  
7-42377-36504-6  
● SPRING 1

EUCALYPTUS  
7-42377-36502-2  
● SPRING 1

CAMEL  
7-42377-36501-5  
● SPRING 1



## Sport Crossbody

\$19  
\$38

MOQ: 5 | 100% heavyweight nylon  
8.25"H x 6"W x 2.5"D

Exterior zip and patch pockets, interior zip pocket. Adjustable, detachable black logo strap. Machine washable.



BRIGHT PINK  
7-42377-36671-5  
● SPRING 1

TOMATO  
7-42377-36594-7  
● SPRING 1

EUCALYPTUS  
7-42377-36591-6  
● SPRING 1

BLACK  
7-42377-36589-3



## Ripstop Tote

\$16  
\$32

MOQ: 5 | 100% ripstop nylon (40% recycled)  
15.75"H x 11"W x 4.75"D

Zips closed. 10" strap drop. Contrast logo strap. Interior pocket. Machine washable.



BRIGHT PINK  
7-42377-36564-0  
● SPRING 1

BB PRINT  
7-42377-36559-6  
● SPRING 2

BRONZE  
7-42377-36354-7

BLACK  
6-89247-84805-9





# NYLON

WHSL  
MSRP

- Spring 1 Ships 1/28-2/11
- Spring 2 Ships 3/3-3/17

## Mini Cloud Bag

\$22  
\$44

MOQ: 5 | 100% heavyweight nylon  
10.25"H x 15.75"W x 5.5"D

10" strap drop. Detachable interior pouch.  
Machine washable.



BRIGHT PINK  
7-42377-36576-3  
● SPRING 1

TOMATO  
7-42377-36581-7  
● SPRING 1

CAMEL  
7-42377-36577-0  
● SPRING 1

BLACK  
7-42377-36813-9



## Cloud Bag

\$26  
\$52

MOQ: 2 | 100% heavyweight nylon  
13.75"H x 21"W x 8"D

9.5" strap drop. Detachable interior pouch.  
Machine washable.



TOMATO  
7-42377-36483-4  
● SPRING 1

EUCALYPTUS  
7-42377-36482-7  
● SPRING 1

CAMEL  
7-42377-36481-0  
● SPRING 1

BLACK  
6-89247-84853-0



## Travel Cloud Bag

\$38  
\$76

MOQ: 2 | 100% heavyweight nylon  
17"H x 25"W x 9.75"D

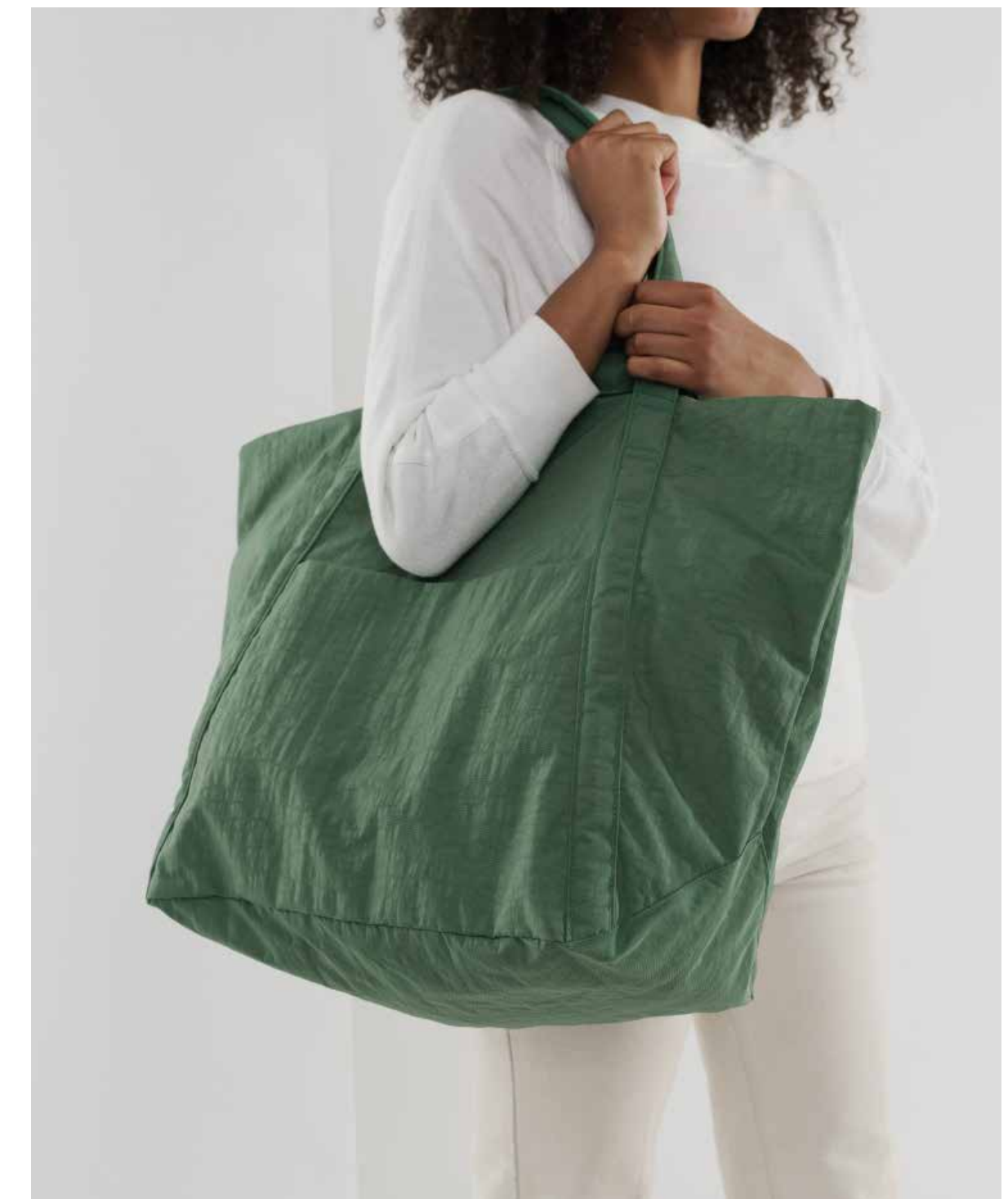
11" shoulder strap drop. Detachable interior pouch.  
Machine washable.



TOMATO  
7-42377-36604-3  
● SPRING 1

EUCALYPTUS  
7-42377-36601-2  
● SPRING 1

BLACK  
6-89247-84867-7



# NYLON

WHSL  
MSRP

- Spring 1 Ships 1/28-2/11
- Spring 2 Ships 3/3-3/17

## Small Sport Backpack

\$34  
\$68

MOQ: 2 | 100% heavyweight nylon  
13.25"H x 14"W x 6"D

Interior laptop sleeve. 17" adjustable black logo straps. Recycled ripstop nylon lining. Machine washable.



TOMATO 7-42377-36588-6 ● SPRING 1  
PERIWINKLE 7-42377-36587-9 ● SPRING 1  
CAMEL 7-42377-36584-8 ● SPRING 1  
BLACK 7-42377-36583-1



## Large Sport Backpack

\$42  
\$84

MOQ: 2 | 100% heavyweight nylon  
17.5"H x 18.5"W x 8"D

Interior laptop sleeve. 18" adjustable black logo straps. Recycled ripstop nylon lining. Machine washable.



CAMEL 7-42377-36572-5 ● SPRING 1  
BLACK 7-42377-36571-8



## Packable Backpack

\$18  
\$36

MOQ: 5 | 100% ripstop nylon (40% recycled)  
16.5"H x 10.5"W x 6"D

18" adjustable straps. Packs down into front pocket. Machine washable.



TOMATO 7-42377-36525-1 ● SPRING 1  
BRONZE 7-42377-36835-1  
BLACK 7-42377-36579-4



# CANVAS

WHSL  
MSRP

- Spring 1 Ships 1/28-2/11
- Spring 2 Ships 3/3-3/17

# Duck Bag

\$17  
\$34

MOQ: 5 | 16oz canvas  
15.75"H x 15.75"W x 4.75"D

20" strap drop. 100% cotton (65% recycled).  
Machine washable.



**PUNCH RED**  
7-42377-36467-4  
● SPRING 1

**EUCALYPTUS**  
7-42377-36464-3  
● SPRING 1

**INDIGO**  
7-42377-36465-0  
● SPRING 1

**NUTMEG**  
7-42377-36466-7  
● SPRING 1

**LEOPARD**  
7-42377-36396-7

**NATURAL GRID**  
6-89247-84857-8



**NATURAL CANVAS**  
6-89247-84859-2

**SAILOR STRIPE**  
6-89247-84860-8



**BLACK**  
6-89247-84858-5



**WASHED BLACK**  
6-89247-84910-0

- ← Garment
- ← Washed
- ← Denim

- ← \$44 MSRP
- ← \$22 WHSL

# Drawstring Backpack

\$22  
\$44

MOQ: 5 | 16oz canvas  
15"H x 10.5"W x 5"D

Adjustable straps. Drawstring and flap closure with snap. 100% cotton (65% recycled). Machine washable.



**EUCALYPTUS**  
7-42377-36460-5  
● SPRING 1

**NUTMEG**  
7-42377-36462-9  
● SPRING 1

**NATURAL GRID**  
6-89247-84856-1

**BLACK**  
6-89247-84855-4



# CANVAS

WHSL  
MSRP

- Spring 1 Ships 1/28-2/11
- Spring 2 Ships 3/3-3/17

## Merch Tote

\$8  
\$16

MOQ: 10 | 8oz canvas  
15"H x 11.75"W x 3"D

100% cotton (65% recycled).  
Machine washable.



BLACK  
6-89247-84863-9



CANTALOUPE  
7-42377-36488-9  
● SPRING 1



JADE  
7-42377-36489-6  
● SPRING 1



PERIWINKLE  
7-42377-36490-2  
● SPRING 1



NATURAL CANVAS  
6-89247-84864-6



## Giant Pocket Tote

\$31  
\$62

MOQ: 2 | 16oz canvas  
17.75"H x 21.5"W x 8"D

100% cotton (65% recycled). 4.5" handle drop.  
10" strap drop. Machine washable.



WASHED  
PUNCH RED  
7-42377-36487-2  
● SPRING 1



WASHED  
EUCALYPTUS  
7-42377-36484-1  
● SPRING 1



WASHED BLACK  
7-42377-36651-7  
● SPRING 1

← Garment  
← Washed  
← Denim



## Canvas Market Tote

\$24  
\$48

MOQ: 2 | 16oz canvas  
16.5"H x 12"W x 7"D

100% cotton (65% recycled).



EUCALYPTUS  
7-42377-36450-6  
● SPRING 1



BROWN PAPER  
7-42377-36391-2



# LEATHER

WHSL  
MSRP

- Spring 1 Ships  
1/28-2/11
- Spring 2 Ships  
3/3-3/17

## Small Block Purse

NEW!

\$90  
\$180

MOQ: 1 | Top grain leather body, recycled canvas lining | 5"H x 7.5"W x 2.25"D

19" max strap drop. Adjustable black logo strap.



BRIGHT PINK  
7-42377-36470-4  
● SPRING 2

JADE  
7-42377-36471-1  
● SPRING 2

KELP  
7-42377-36472-8  
● SPRING 2

BLACK  
7-42377-36469-8  
● SPRING 2



## Block Purse

NEW!

\$110  
\$220

MOQ: 1 | Top grain leather body, recycled canvas lining | 5.5"H x 10"W x 3"D

22.5" max strap drop. Adjustable black logo strap.



KELP  
7-42377-36438-4  
● SPRING 2

BLACK  
7-42377-36434-6  
● SPRING 2



# LEATHER

WHSL  
MSRP

- Spring 1 Ships 1/28-2/11
- Spring 2 Ships 3/3-3/17

## Small Crescent Purse **NEW!**

\$90  
\$180

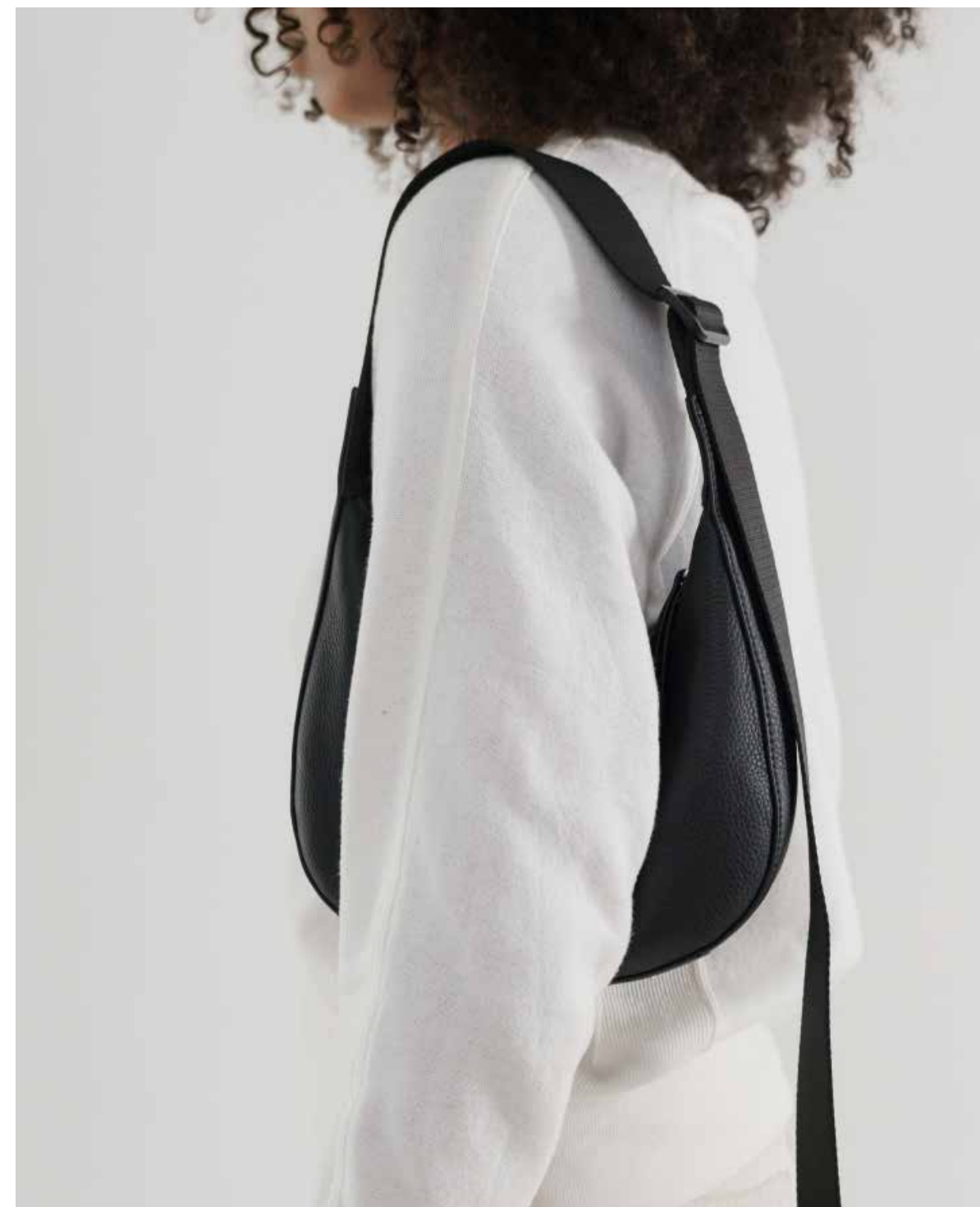
MOQ: 1 | Full grain leather body, recycled canvas lining | 6"H x 10"W x 2.5"D

16.5" strap drop. Made of DriTan™ by ECCO leather.



STONE  
7-42377-36474-2  
● SPRING 1

BLACK  
7-42377-36473-5  
● SPRING 1



## Large Crescent Purse **NEW!**

\$130  
\$260

MOQ: 1 | Full grain leather body, recycled canvas lining | 10.25"H x 15.5"W x 4.5"D

20" strap drop. Made of DriTan™ by ECCO leather. Fits a 13" laptop.



STONE  
7-42377-36447-6  
● SPRING 1

BLACK  
7-42377-36446-9  
● SPRING 1



## Soft Crossbody Purse

\$73  
\$146

MOQ: 2 | Full grain leather body, recycled canvas lining | 8"H x 5"W x 3"D

23" strap drop. Internal zip pocket. Fully lined.



BLACK  
6-89247-84785-4



# DISPLAYS

WHSL

- Spring 1 Ships  
1/28-2/11
- Spring 2 Ships  
3/3-3/17

## Acrylic Display Box

\$18

MOQ: 2 | 100% acrylic  
3"H x 15"W x 8"D

An acrylic display box sized to fit 36 Standard Baggus. Branded with a 3" x 5" BAGGU logo printed on both sides. Product sold separately.



CLEAR  
7-42377-36558-9



## T Stand

\$15

MOQ: 1 | Powder coated stainless steel  
23.25"H x 8.5"W x 10.5"D

A T-stand perfect for displaying Standard and Baby Baggus the way they sell best: out of the pouch, stuffed and hanging. Place T-stand alongside pouched Baggus for an eye-catching display. Wipe clean with a damp cloth.



WHITE  
6-08887-84407-8



## S Hook Set

\$10

MOQ: 1 | Powder coated stainless steel  
4"H x 2"W x 2"D

Merchandise totes, backpacks, and travel bags at just the right angle. Hang bags from twisted S Hooks on dowels and garment racks. Sold in packs of 5. Wipe clean with a damp cloth.



WHITE  
6-08887-84406-1

